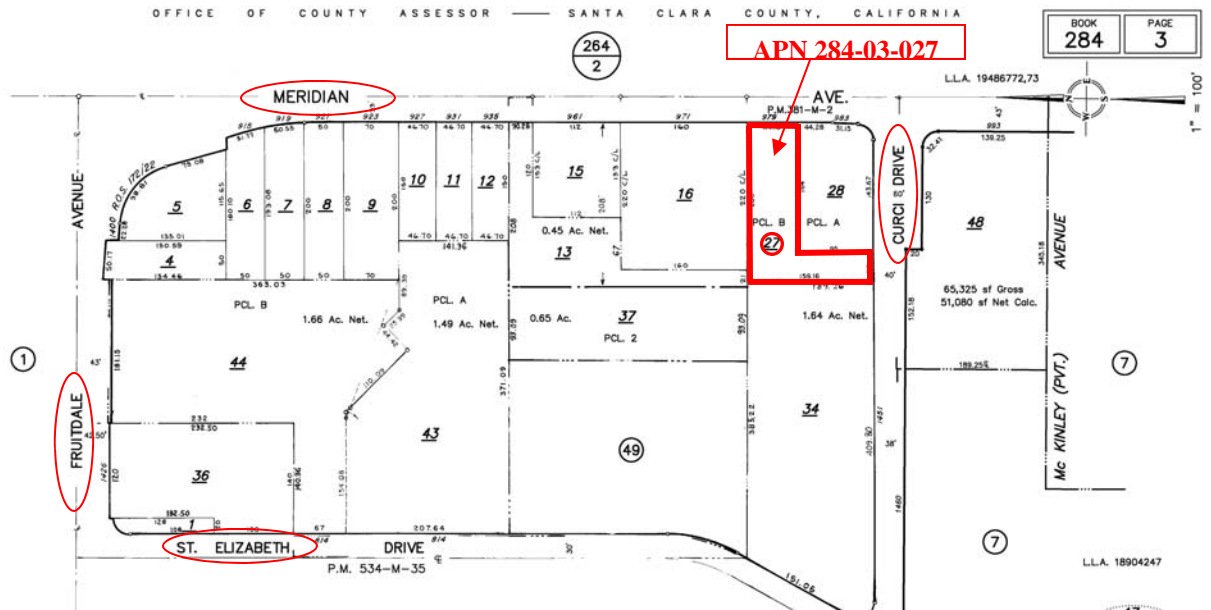


Wedgewood Properties

Investment Real Estate Services

**For Sale: +/- 16,255 SF Commercial Lot
with 1,500 SF House
979 Meridian Ave., San Jose, CA**

For Sale



- ◆ This lot (APN 284-03-027) is prime for redevelopment. The property is currently zoned Agriculture (A), but the City of San Jose's General Plan designates the future land use for this parcel as "General Commercial".
- ◆ Property is located on Meridian Ave and Curci Drive next to a Kentucky Fried Chicken Restaurant.
- ◆ House could be converted into an office/retail space or replaced with a new building.
- ◆ Major condo and apartment complexes (Villa Fontana's, Fruitdale Station, St. Elizabeth Park, and Merrill Gardens) are located near this property.
- ◆ Price: \$649,000

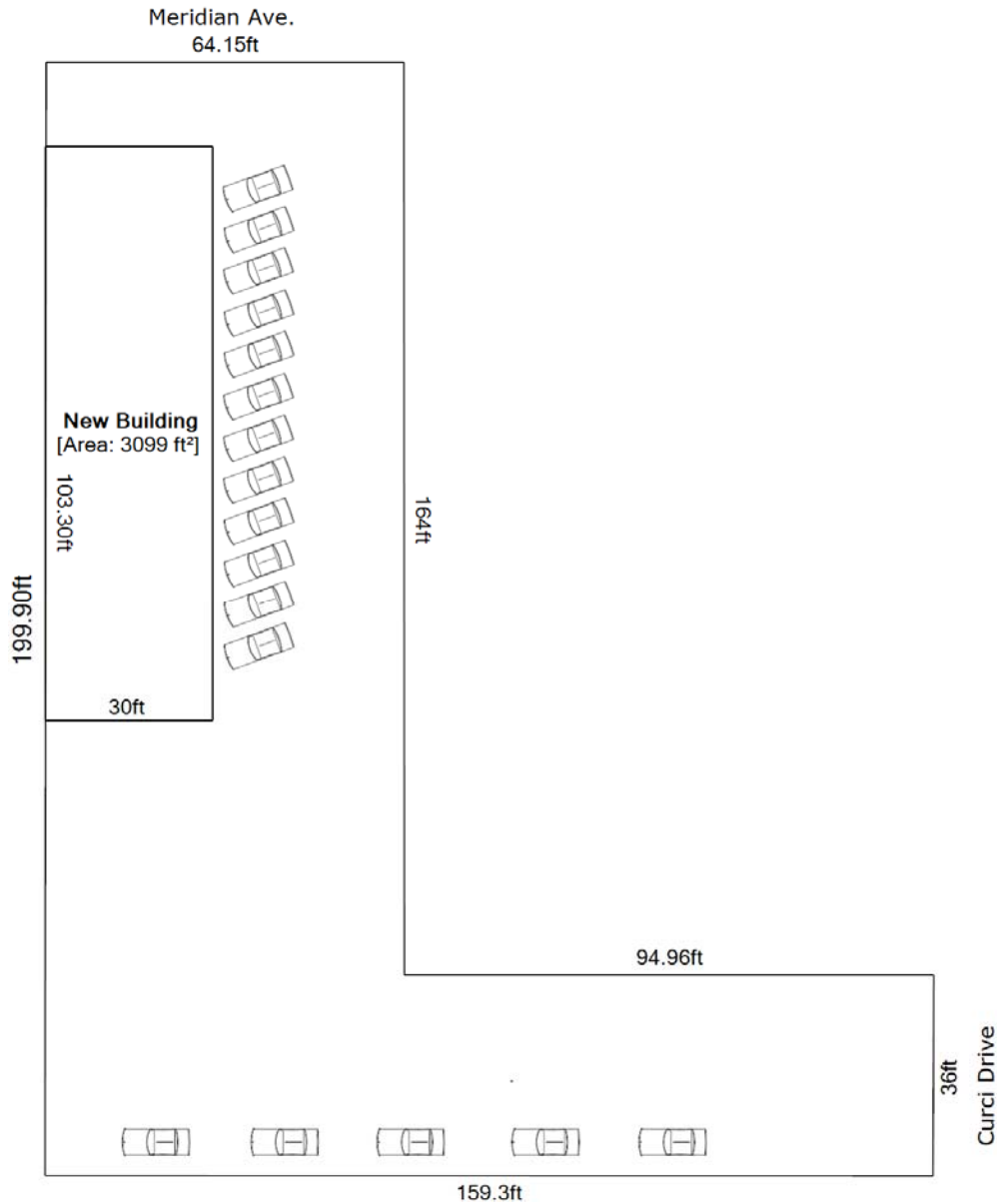
Steve Peck
DRE# 00929101
Exclusive Agent
408-307-9785
speck@yournext1031.com

Wedgewood Properties
3001 Winchester Blvd, Suite 9, Campbell, CA 95008
408-307-9785 (phone) 408-370-3651 (fax)

The above information, while not guaranteed, has been secured from sources we believe to be reliable.

For Sale

**Proposed Building Configuration for
979 Meridian Ave, San Jose, CA
3,100 SF Retail Space
With 17 Parking Spaces**



Steve Peck
Exclusive Agent
408-307-9785
speck@yournext1031.com
www.CREsmartguys.com

Wedgewood Properties
3001 Winchester Blvd, Suite 9, Campbell, CA 95008
408-307-9785 (phone) 408-370-3651 (fax)

The above information, while not guaranteed, has been secured from sources we believe to be reliable.